



Some Important Follow Up Data...

STSA Board

OTHER PUBLIC PARKS IN SPRINGFIELD TOWNSHIP

10 Baseball Fields

4 Soccer Fields

2 Outdoor and

2 Indoor Basketball Courts

5 Playgrounds

**0 Parks for Bikes, Skateboards or
Scooters**

PARTICIPATION DATA:

**3-3.8 Million Youth Play Baseball
Annually in the U.S.**

(Source: [WIFITALENTS.COM](https://www.wifitalents.com) Data Reports 2026)

**4.5 Million Youth (under 18)
Skateboard Nationally in the U.S.**

(Source: ZIPDO Education Report 2026)

BOTTOM LINE:

**There is a disproportionate number of fields
to skateparks based on estimated users of
these parks**

Benchmarks for Skatepark Planning

Skatepark advocacy and parks agencies often use these standards:

- **1 skatepark per 20,000–25,000 residents**
- **Service radius:**
 - **1 mile** for Neighborhood Skatepark
 - **3–5 miles** for a larger Community Skatepark

When a skatepark is **within 1 mile**, participation is *much* higher, especially among younger kids and beginners (SOURCE: www.publicskateparkguide.org)

Springfield Township has an estimated population of about **21,171 People (from a 2024 survey)**

22% are under 18 which means 4850 are kids and teens

BOTTOM LINE:

Most kids need a skatepark within a mile to use it regularly.

Teens can manage getting to a skatepark within 2-5 miles IF rides are available.

Anything further becomes a barrier and not a destination.

This information should prove that kids from outside the district are less likely to frequent the park as well as our kids will less likely travel outside the district to parks.

Environment and Risk Factors of Street Skating vs Park Skating

Factor	Street Skating	Skatepark Skating
Surface	Concrete or asphalt, often uneven, cracks, potholes, debris	Smooth concrete ramps, bowls, and rails designed for skating
Obstacles	Cars, pedestrians, curbs, street furniture, slopes	Ramps, rails, ledges, bowls; designed for tricks
Traffic Hazards	High — risk of vehicle collisions, especially at intersections	Low — traffic-free; controlled environment
Predictability	Low — street surfaces vary, hazards unpredictable	High — surfaces and obstacles are known and designed for skating

BOTTOM LINE:

Streets are inherently riskier due to **traffic and uneven surfaces**, while skateparks are designed to reduce unpredictable hazards.

TOP 10 MISCONCEPTIONS OF SKATEPARKS

1. “Skateparks attract crime”

Reality:

Skateparks are *not* associated with higher crime rates.

- Multiple studies show **no increase in crime** near skateparks
- Parks are busiest in daylight and early evening
- Skaters *self-police* — they don’t want cops showing up

👉 In practice, skateparks often **reduce** trespassing and skating in parking lots and plazas. **90 % of officers surveyed said the skatepark is a community asset, not a crime magnet.**

2. “Only teenage boys use skateparks”

Reality:

Skateparks serve **a wide range of users**:

- Kids as young as **5–6**
- Teens
- Adults in their 30s–50s
- **Girls**, families, scooters, BMX (depending on rules)

Modern parks are designed for **all skill levels**, not just advanced.

3. “Skateparks are loud and disruptive”

Reality:

Skateparks are usually **quieter than basketball courts**.

- Mostly rolling sounds, not shouting
- No whistles, no amplified sound
- Noise is intermittent, not constant

Residents living next to skateparks often report they’re **less noticeable than expected**.

4. “Kids will get hurt constantly”

Reality:

Injury rates at skateparks are **lower than many organized sports**.

- Comparable to basketball and soccer
- Helmets + pads greatly reduce risk
- Purpose-built parks are **safer than streets and parking lots**

👉 When kids don’t have parks, injuries actually go *up* because they skate unsafe terrain.

TOP 10 MISCONCEPTIONS OF SKATEPARKS

5. “Skateparks attract kids from ‘outside the township’”

Reality:

Most users are **local**.

- Neighborhood parks serve nearby kids
- Even regional parks mostly draw from within **3–5 miles**
- Traveling skaters spend money locally and don’t cause problems

This concern comes up a lot — and almost never materializes.

6. “Skateparks are expensive to maintain”

Reality:

Skateparks are among the **cheapest sports facilities** to operate.

- No grass, no irrigation
- No lighting required (though optional)
- Concrete parks last **30–50 years** with minimal upkeep

Compared to ball fields, skateparks are *extremely* cost-effective.

7. “They’ll sit empty most of the time”

Reality:

Well-designed skateparks are **used constantly**.

- After school
- Weekends
- Summer mornings and evenings
- Even adults before/after work

Skateparks often become one of the **most-used facilities per square foot** in a park system.

8. “Skaters are troublemakers”

Reality:

Skateboarding culture values:

- Respect
- Taking turns
- Helping beginners
- Keeping parks clean

Most skaters are **protective of their space** and report problems quickly.

TOP 10 MISCONCEPTIONS OF SKATEPARKS

9. “A skatepark encourages loitering”

Reality:

Skateparks encourage **active use**, not loitering.

- Users are moving, practicing, learning
- Parents often stay and watch
- The space is visibly productive

This is very different from empty hangout areas.

10. “Kids will stop using it after a few years”

Reality:

Skateboarding has **multi-decade retention**.

- Kids start young
- Teens progress
- Adults keep skating for fitness and stress relief

A good skatepark serves **multiple generations**.

In reality, skateparks are **safe, inclusive, cost-effective, and heavily used** community assets.

This information was gathered through the following resources...

Tony Hawk Foundation / Public Skatepark Development Guide (2009 law-enforcement study)

The Skatepark Project (advocacy & grant organization)

Pew Health Impact Assessment of a Skatepark

Public Skatepark Development Guide (environmental FAQ)

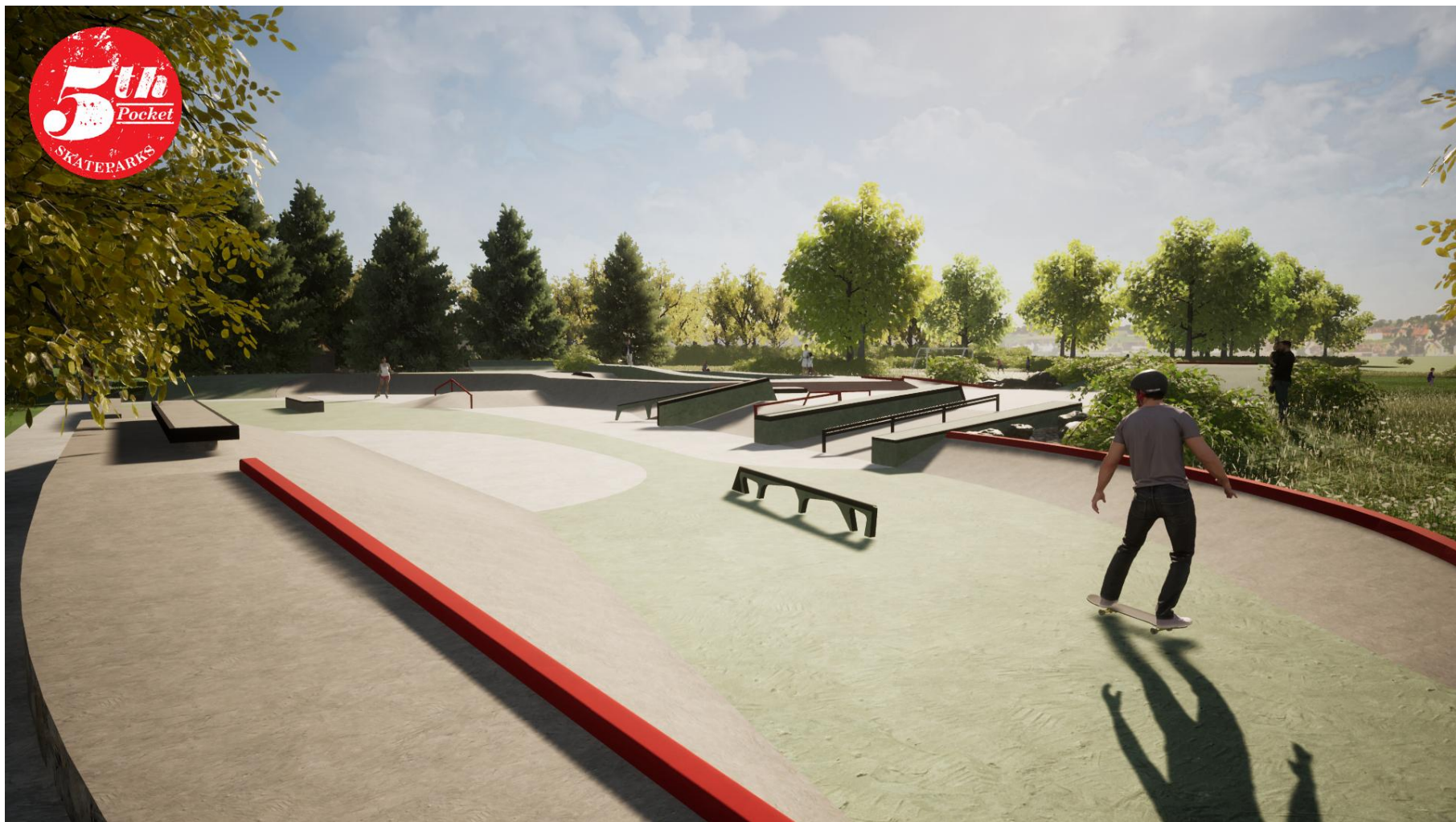
Health Impact Assessment

Better Skateparks / Culture Articles

Public Skatepark Advocacy Resources













If there are any further questions or information requested please reach out to...

Carmel Archdekin

President of the STSA

carmelsellsphilly@gmail.com

215.680.5998