



Some Important Follow Up Data...

STSA Board

OTHER PUBLIC PARKS IN SPRINGFIELD TOWNSHIP

10 Baseball Fields

4 Soccer Fields

2 Outdoor and

2 Indoor Basketball Courts

5 Playgrounds

**0 Parks for Bikes, Skateboards or
Scooters**

PARTICIPATION DATA:

**3-3.8 Million Youth Play Baseball
Annually in the U.S.**

(Source: [WIFITALENTS.COM](https://www.wifitalents.com) Data Reports 2026)

**4.5 Million Youth (under 18)
Skateboard Nationally in the U.S.**

(Source: ZIPDO Education Report 2026)

BOTTOM LINE:

**There is a disproportionate number of fields
to skateparks based on estimated users of
these parks**

Benchmarks for Skatepark Planning

Skatepark advocacy and parks agencies often use these standards:

- **1 skatepark per 20,000–25,000 residents**
- **Service radius:**
 - **1 mile** for Neighborhood Skatepark
 - **3–5 miles** for a larger Community Skatepark

When a skatepark is **within 1 mile**, participation is *much* higher, especially among younger kids and beginners (SOURCE: www.publicskateparkguide.org)

Springfield Township has an estimated population of about **21,171 People (from a 2024 survey)**

22% are under 18 which means 4850 are kids and teens

BOTTOM LINE:

Most kids need a skatepark within a mile to use it regularly.

Teens can manage getting to a skatepark within 2-5 miles IF rides are available.

Anything further becomes a barrier and not a destination.

This information should prove that kids from outside the district are less likely to frequent the park as well as our kids will less likely travel outside the district to parks.

Noise Level Comparison Chart (In Decibels/dB)

source: salushealth.com & publicskateparkguide.org & Resnick Audiology

<u>Noise Source</u>	<u>Approx. Sound Level (dB)</u>	<u>Context</u>
Skatepark (typical activity)	~65–71 dB	Similar to playground or friendly outdoor activity near you
Soccer Field during games	~55-66 dB with peaks ~75–79 dB	During Matches, Occasional Peaks for Crowds/Parents etc
Busy street traffic	~70–80 dB	Comparable to everyday city sound
Vacuum cleaner / noisy restaurant	~75–85 dB	Noticeably louder than normal speech
Lawn mower / subway / truck	~85–95 dB	Loud equipment or transit noise
Football game / loud event	~100+ dB	Very loud, short exposures only

Environment and Risk Factors of Street Skating vs Park Skating

Factor	Street Skating	Skatepark Skating
Surface	Concrete or asphalt, often uneven, cracks, potholes, debris	Smooth concrete ramps, bowls, and rails designed for skating
Obstacles	Cars, pedestrians, curbs, street furniture, slopes	Ramps, rails, ledges, bowls; designed for tricks
Traffic Hazards	High — risk of vehicle collisions, especially at intersections	Low — traffic-free; controlled environment
Predictability	Low — street surfaces vary, hazards unpredictable	High — surfaces and obstacles are known and designed for skating

BOTTOM LINE:

Streets are inherently riskier due to **traffic and uneven surfaces**, while skateparks are designed to reduce unpredictable hazards.

TOP 10 MISCONCEPTIONS OF SKATEPARKS

1. "Skateparks attract crime."

Reality: Studies and municipal police reports consistently show skateparks **do not increase crime**. In many cases, they **activate underused space**, increasing visibility and natural surveillance.

2. "Skateparks are extremely loud."

Reality: Noise levels are typically **comparable to playgrounds, basketball courts, or traffic** and are **intermittent**, not constant.

3. "Only skateboarders use skateparks."

Reality: Modern skateparks are used by **skateboarders, BMX riders, scooter users, and inline skaters**, across multiple age groups.

4. "Skateparks are only for teenagers."

Reality: Users range from **young children to adults in their 30s–50s+**. Many parents skate with their kids.

5. "Skateparks encourage dangerous behavior."

Reality: Purpose-built skateparks are **safer than street skating**, reducing injuries and property damage by providing a controlled environment.

6. "They become hangouts with no supervision."

Reality: Skateparks are **self-policing environments**. Regular users tend to enforce rules, discourage misuse, and look out for each other. Check out this video for further info...<https://www.facebook.com/share/v/17mtnzh5eE/>

7. "Skateparks lower nearby property values."

Reality: Research and real-world examples show **no negative impact** on property values; some communities report increased park usage and neighborhood vitality.

8. "Maintenance costs are high."

Reality: Concrete skateparks have **low long-term maintenance costs**, often lower than playground equipment or athletic fields.

9. "Skateparks quickly fall into disrepair."

Reality: Well-designed concrete skateparks can last **30–40+ years** with minimal upkeep.

10. "If we build it, people will loiter all night."

Reality: Like other parks, skateparks follow **posted hours**. Loitering issues are addressed the same way as in any public space.

Sources: ckecommunity.com; www.pew.org; publicskateparkguide.org; Tony Hawk Foundation and a study done by Cornell University;

Testimony from Middletown Township Dir of Parks and Recreations...Paul Kopera

Nov 7, 2025...

"As a P&R Amenity: I joke that I would put a skpk on every other block in Middletown because once you build it, Jesse (5th Pocket) does a maintenance routine every other year and I expect it will last 25 years. I don't need staff to watch it.

The skpk Community: Its what educators call "pro-social behavior". Everyone likes to hang out with like-minded people. You folks will hang out and work on the same move for hours. And once you get, you will show your tips & tricks to the younger skaters. And the people walking their dogs have come to accept the skaters as a normal part of the park. There was some trepidation about the skaters at first because skaters wear woolen hats in 90 degree weather but now it's all good. We allow skateboards, bmx and roller blades so that helps form the sense of sharing and broadens the terms "community". We have children using their RAZR scooters until they get comfy and move up to the board. That helps get the parents on board to a skpk facility. "

"I recently received a call from a grandparent out of the blue. Her granddaughter was taking our skpk lessons and she drove her and stayed. Grandma called the next day just to say what a great facility it is; it was her first time close to the skpk and her granddaughter had a blast. That's more the norm now."

Testimony from Middletown Township Dir of Parks and Recreations...Paul Kopera

Sent: Thursday, October 31, 2024 3:15 PM

To: Paul Kopera <pkopera@middletownbucks.org>

Subject: Community Park Skate Park

Good Morning Mr. Kopera,

I'm writing to say thanks for continuing to maintain the skate park at Community Park.

I'm a lifelong Middletown resident, and currently in Langhorne with my wife and three kids. I've watched my older son, siblings etc. grow up using the baseball and soccer fields around the area. Just recently my 8 year old has found himself enjoying his scooter, and in the past couple of weeks is urging me to get him over to the park. He's had a blast--we've been there when it's mostly empty after school and have been at night when the crowd is a little bigger and older. The other night we pulled up, and had the conversation, "If it's full of older kids and grown-ups, it might not be the best night to practice...you're allowed, but it might make it harder to stay safe." We weren't there but two minutes while he watched when an older (35-40ish) skater came up, introduced himself, and told my 8 year old he's just as welcome to the park as everyone else, to have fun, and gave him the advice to keep an eye out. It was a good moment, and my son felt included and started riding around...the next time we went he asked "Do you think our friend Bob [the older skater] will be there today?"

It's been an overall positive experience there with him, and I'm glad we've kept that park as part of our community.

Thank you,

Testimony from Lansdale Township Dir of Parks and Recreations...Courtney Fox

2/2/2026

Hi Carmel,

Thanks for reaching out! The Fourth Street Skatepark was built before I started in this role, but I can share that overall feedback has been very positive. More recently, we worked closely with the local skate community to install concrete elements at Wedgewood Park. The skaters take a great deal of pride in both spaces and fully fundraised for the improvements at Wedgewood.

There's often a stereotype that skaters cause "trouble," but in my experience, that couldn't be further from the truth. Many of the skaters using these parks are adults who stop by before or after work, and everyone is respectful - especially when sharing the space with newer or younger skaters. I often say that a used park is a safe park, and that has certainly proven true at both locations.

We've also been able to offer skate clinics and youth programs, which have been very well received by the community.

I'm happy to answer any questions or share additional feedback.

Thanks again!

Courtney

Existing Playground is 108.55 Ft from Neighbor on Willow Grove Ave

The screenshot displays a Google Maps interface with a satellite view of a residential area. A white line with circular endpoints measures the distance between a playground and a neighbor. The measurement is labeled "108.55 ft". The playground is located at 1313 E Mermaid Ln, Glenside, PA 19038. The neighbor is located on Willow Grove Ave. The Springfield Township Community Center is also visible. The map includes a sidebar with various map tools and a bottom status bar showing the temperature as 25°F and the time as 12:13 PM on 2/3/2026.

Search Google Maps

Restaurants Hotels Things to do Museums Transit Pharmacies ATMs

Map details

- Transit
- Traffic
- Biking
- Terrain
- Street View
- Wildfires
- Air Quality

Map tools

- Travel time
- Measure

Map type

- Default
- Satellite

☐ Globe view ☒ Labels

Get app

Springfield Township Community Center

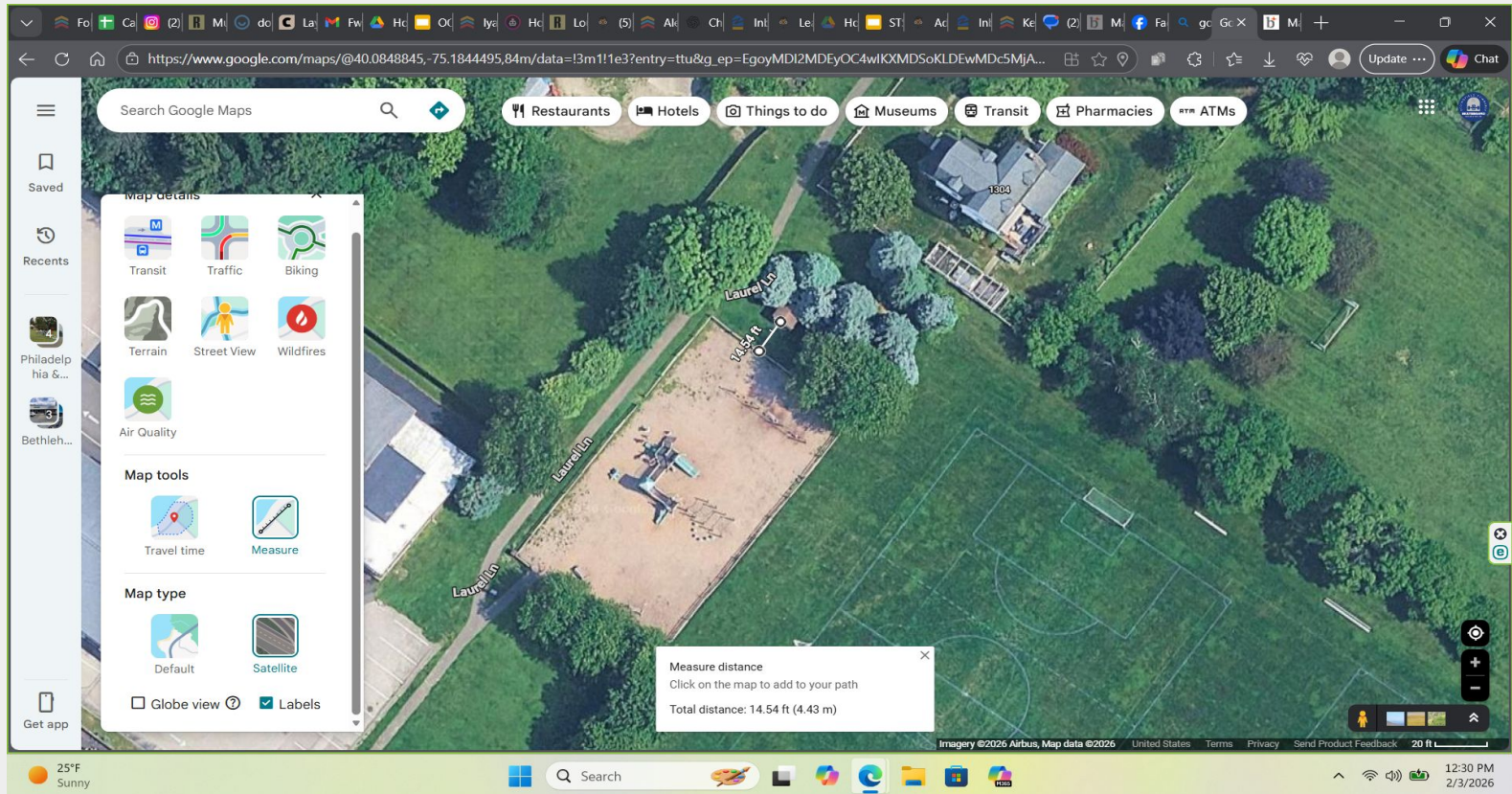
1313 E Mermaid Ln Playground
Glenside, PA 19038
40.084872, -75.184566

Measure distance
Click on the map to add to your path
Total distance: 108.55 ft (33.09 m)

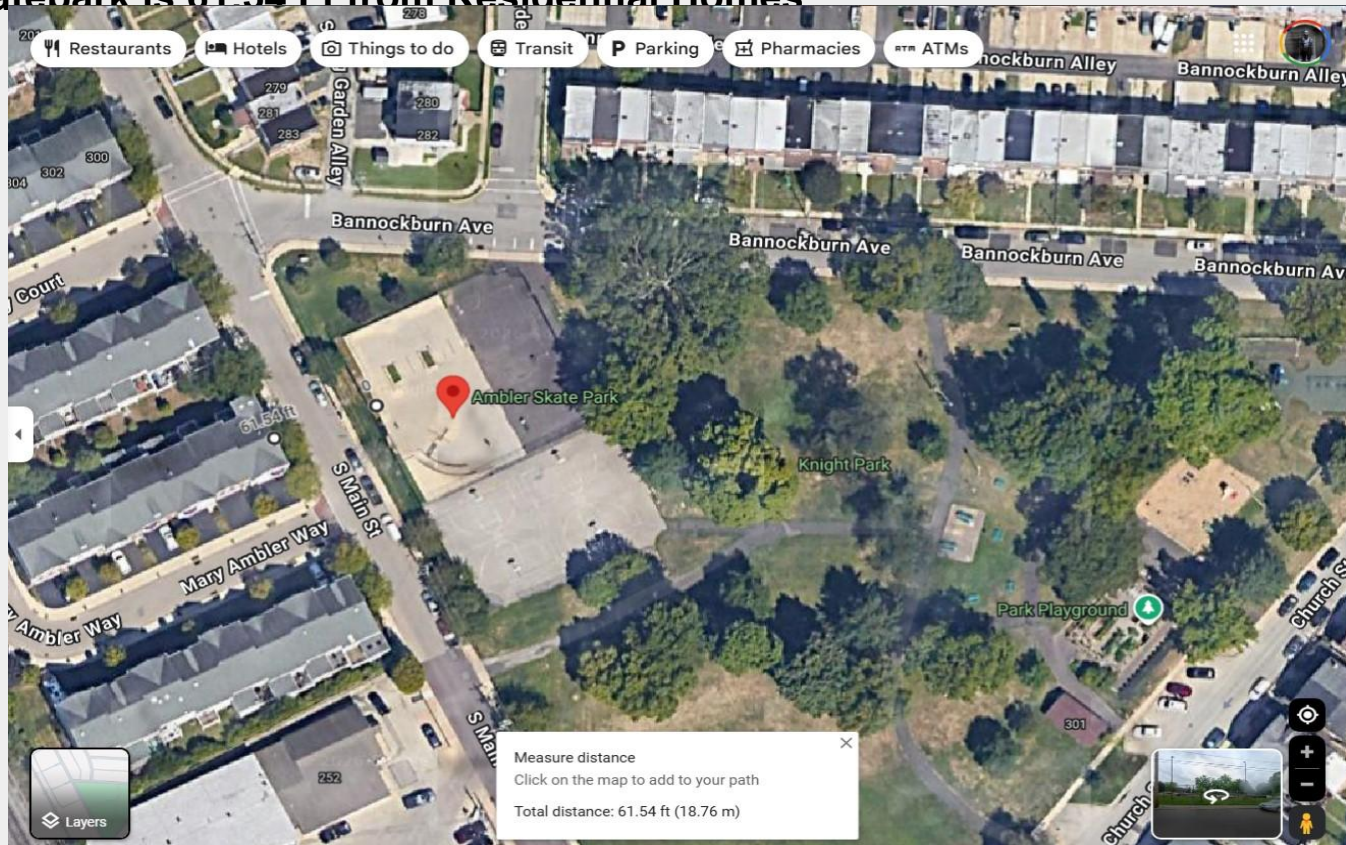
Imagery ©2026, Map data ©2026 Google United States Terms Privacy Send Product Feedback 50 ft

25°F Sunny 12:13 PM 2/3/2026

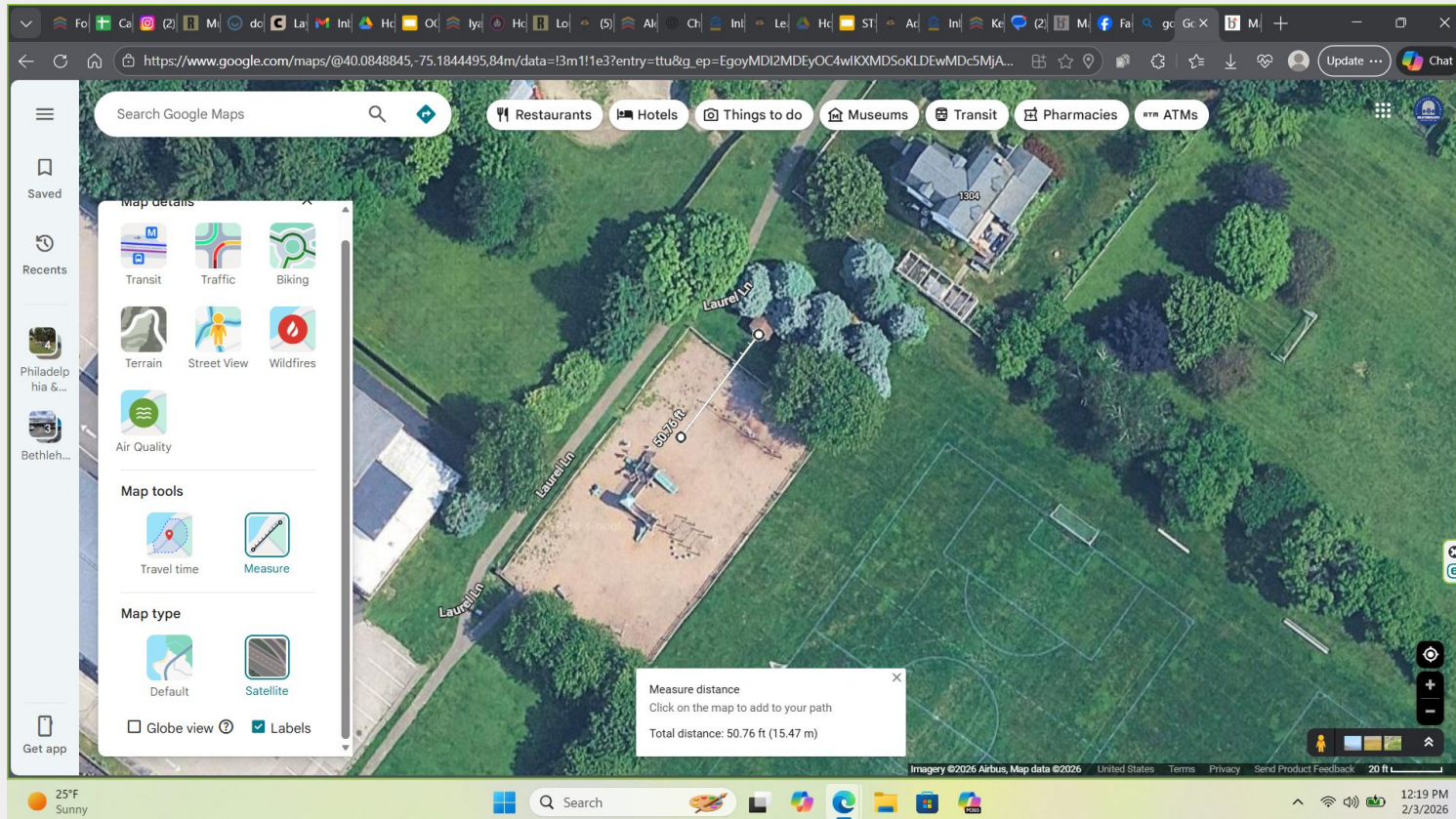
Existing Playground is 14.54 ft to Laurel Lane Neighbor



Ambler Skatepark is 61.54 Ft from Residential Homes



Option to make the skatepark smaller/put in tree/bush/green barrier or fence from Laurel Lane Neighbor







<https://www.facebook.com/share/v/17mtzrh5eE/>



